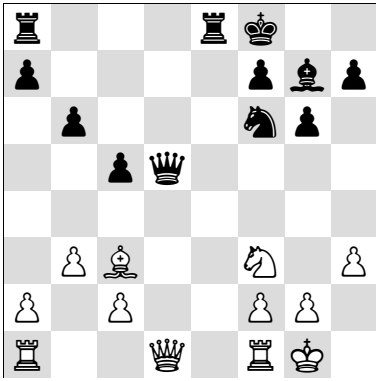
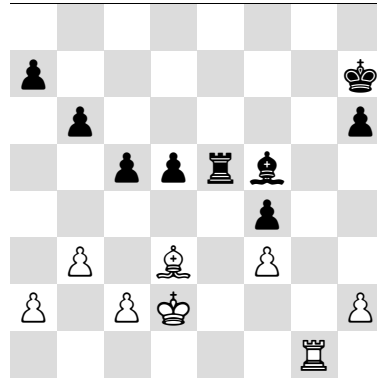


Ausschalten der Verteidigung

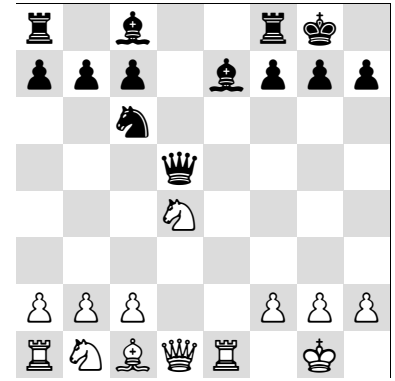
Zwischenzug: A



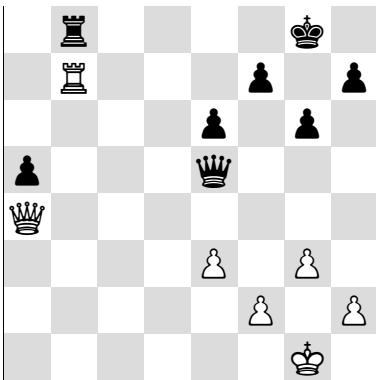
1. Lxf6 Dxd1
2. Lxg7+ Kxg7
3. Txd1 oder Tfxd1



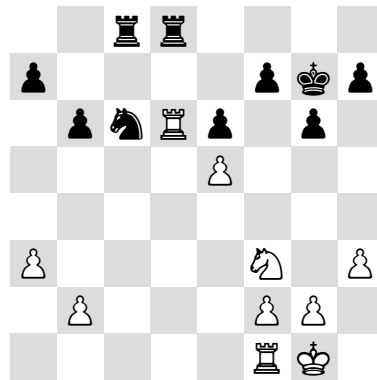
1. Te1 Txe1
2. Lxf5+ Kg7
3. Kxe1



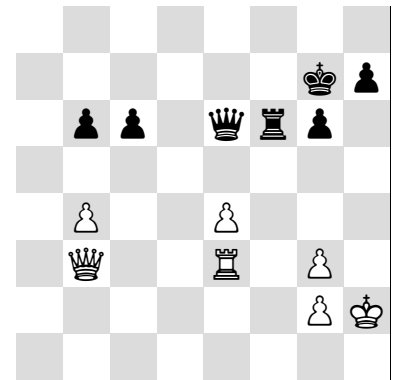
1. Sxc6 Dxd1
2. Sxe7+ Kh8
3. Txd1



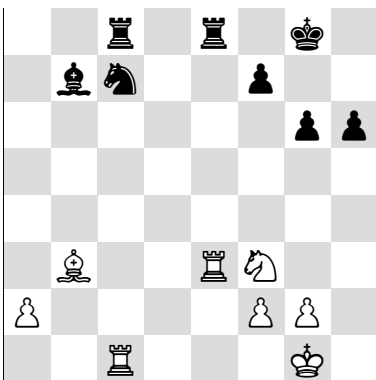
1. Dd4 Dxd4
2. Txb8+ Kg7
3. exd4



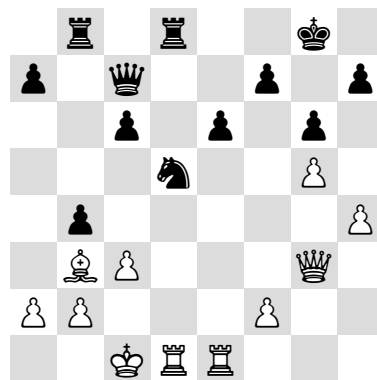
1. ... Sxe5
2. Txd8 Sxf3+
3. gxf3 Txd8



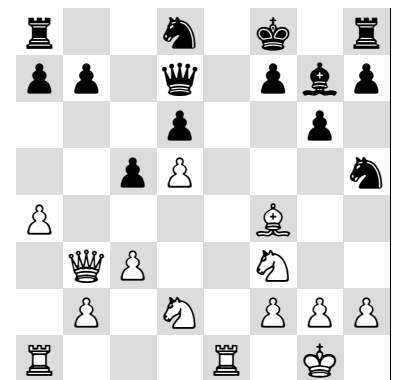
1. e5 Dxb3
2. exf6+ Kxf6
3. Txb3



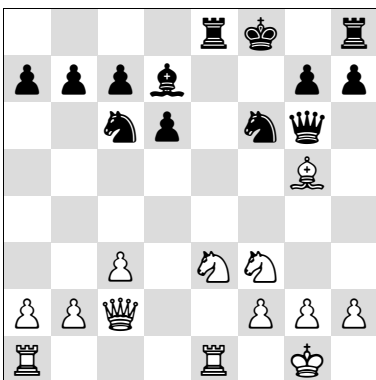
1. Txc7 Txe3
2. Txc8+ Lxc3
3. fxe3



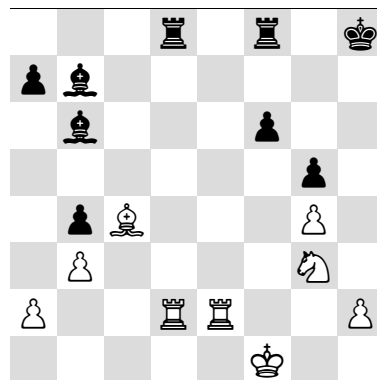
1. Txd5 Dxd3
2. Txd8+ Txd8
3. fxd3



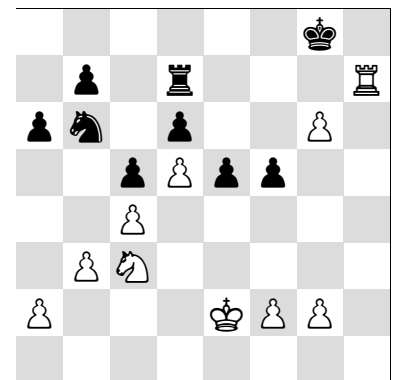
1. Db5 Dxb5
2. Lxd6+ Kg8
3. axb5



1. ... Txe3
2. Dxd6 Txe1+
3. Txe1 hxg6



1. ... Lf3
2. Txd8 Lxe2+
3. Kxe2 Txd8



1. Sa4 Txh7
2. gxh7+ Kxh7
3. Sxb6